



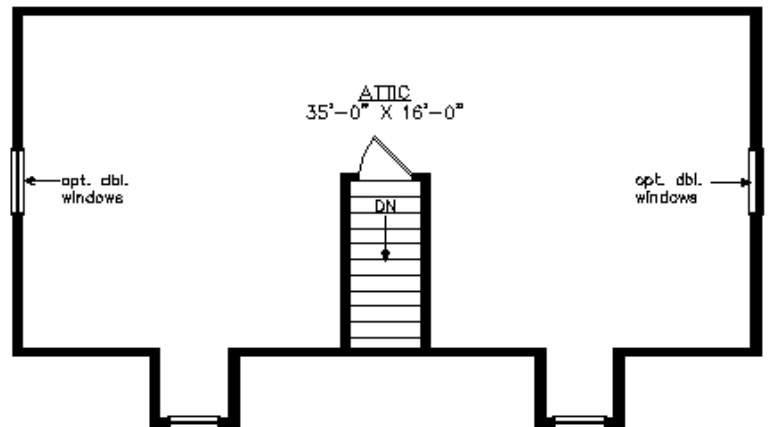
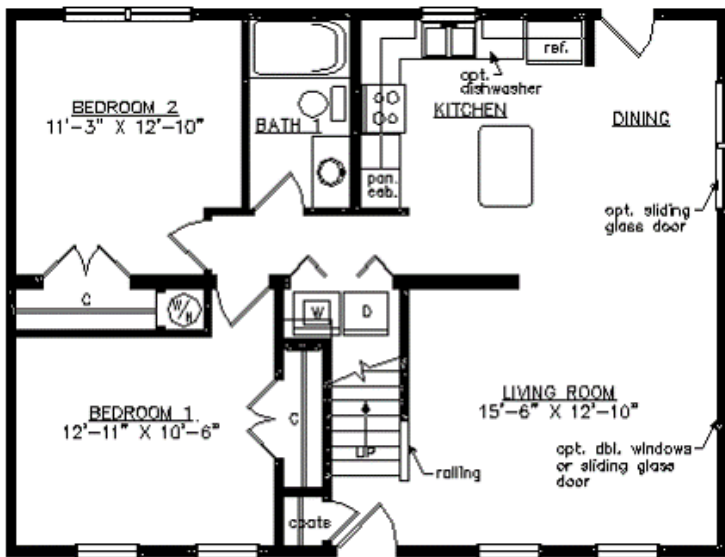
SMALLWOOD CAPE

27'6" x 36'0"

990 SQ. FT. (FINISHED) / 576 SQ. FT. (UNFINISHED)

BEDROOMS: 2 BATHS: 1

SHOWN WITH OPTIONAL PORCH, FANLITE DOOR AND DORMER



Virginia Homes
Building Systems

www.virginiahomesbuildingsystems.com

A Division of Modular Building Systems of PA