



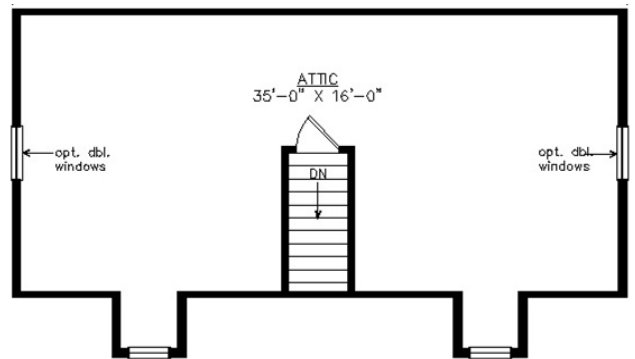
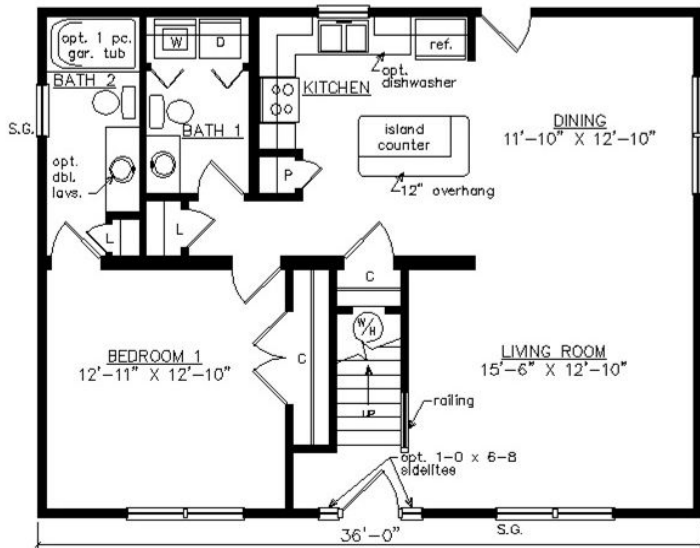
SHENANDOAH CAPE

27'6" x 36'

990 SQ. FT. (FINISHED) / 576 SQ. FT. (UNFINISHED)

BEDROOMS: 1 BATHS: 1.5

SHOWN WITH OPTIONAL STOOP,
FANLITE DOOR AND DORMERS



Virginia Homes
Building Systems

www.virginiahomesbuildingsystems.com

A Division of Modular Building Systems of PA