



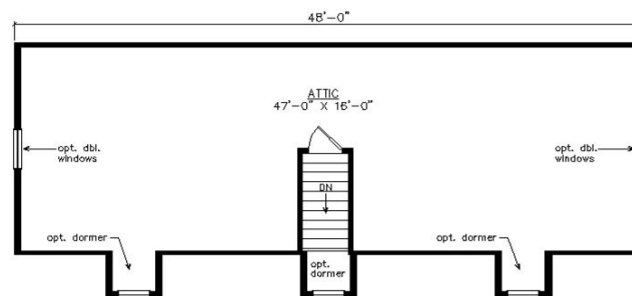
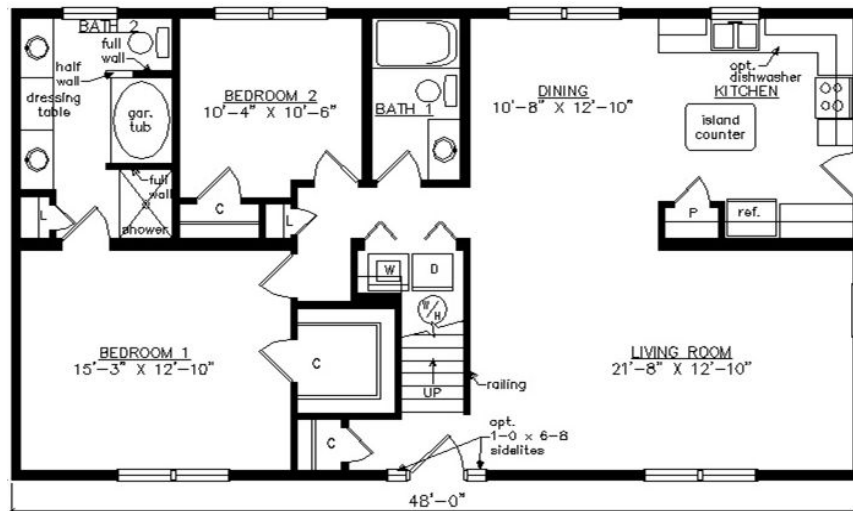
ROCKPORT CAPE

27'6" x 48'

1320 SQ. FT. (FINISHED) / 800 SQ. FT. (UNFINISHED)

BEDROOMS: 2 BATHS: 2

SHOWN WITH OPTIONAL PORCH, TRIANGLE GABLE VENTS,
FANLITE DOOR, DOOR SIDELITES AND DORMERS



Virginia Homes
Building Systems

www.virginiahomesbuildingsystems.com

A Division of Modular Building Systems of PA