



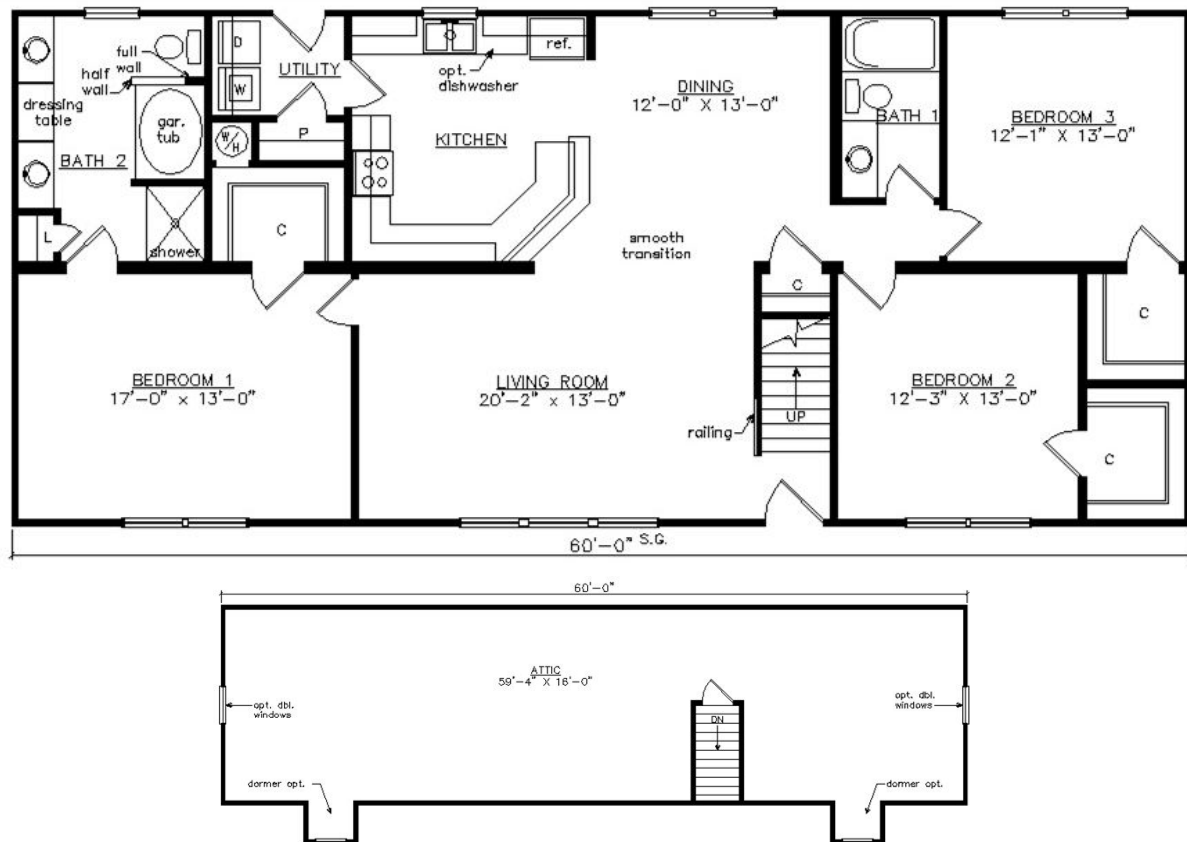
# PARK AVENUE CAPE

27'6" x 60'

1650 SQ. FT. (FINISHED) / 1000 SQ. FT. (UNFINISHED)

BEDROOMS: 3 BATHS: 2

SHOWN WITH OPTIONAL PORCH,  
DORMERS AND FANLITE DOOR



**Virginia Homes**  
Building Systems

[www.virginiahomesbuildingsystems.com](http://www.virginiahomesbuildingsystems.com)

A Division of Modular Building Systems of PA