



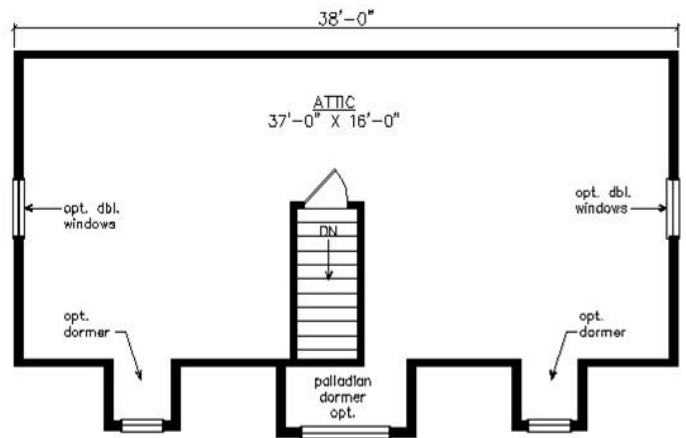
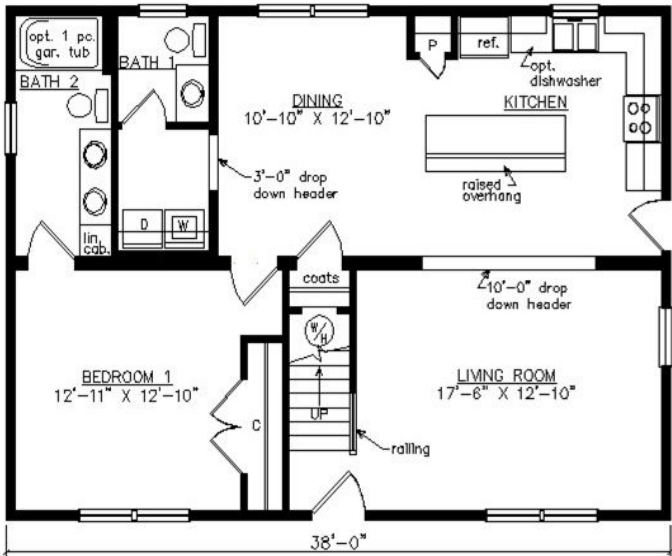
PITTSYLVANIA CAPE

27'6" x 38'

1045 SQ. FT. (FINISHED) / 608 SQ. FT. (UNFINISHED)

BEDROOMS: 1 BATHS: 1.5

SHOWN WITH OPTIONAL PORCH,
FANLITE DOOR AND DORMERS



Virginia Homes
Building Systems

www.virginiahomesbuildingsystems.com

A Division of Modular Building Systems of PA