



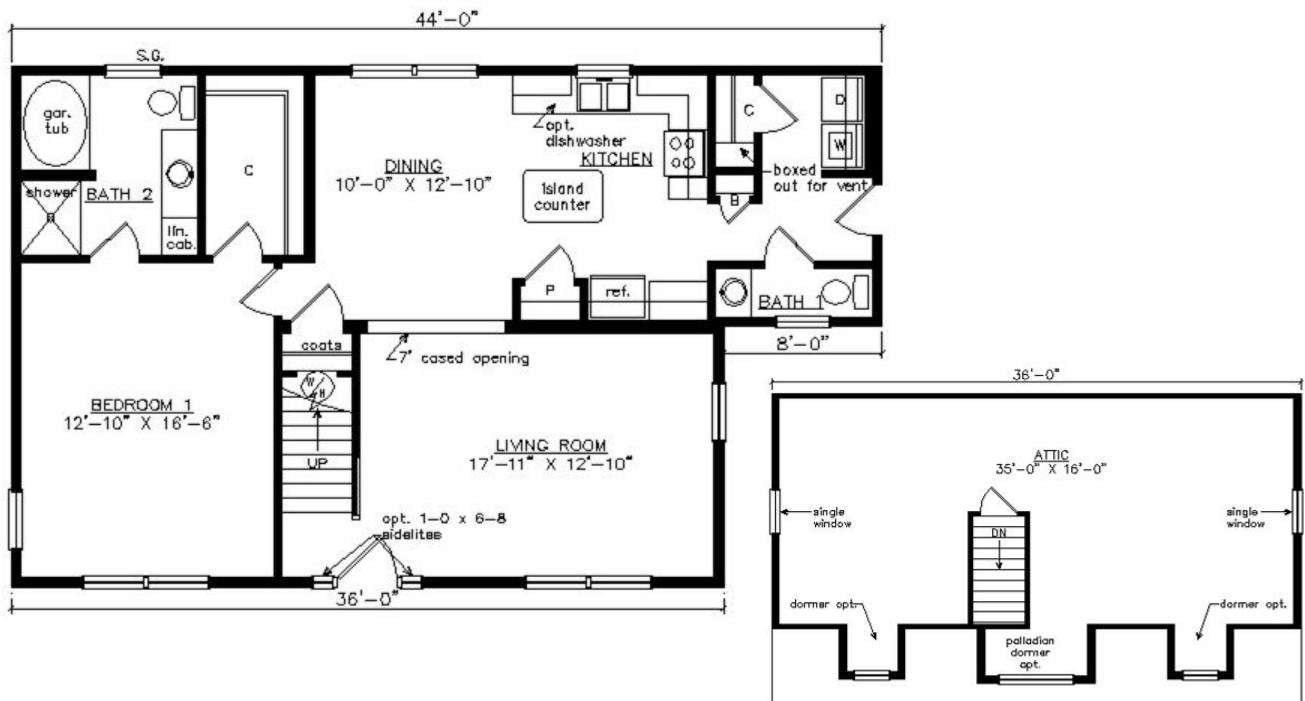
# OXFORD CAPE

27'6" x 44'

1100 SQ. FT. (FINISHED) / 576 SQ. FT. (UNFINISHED)

BEDROOMS: 1 BATHS: 1.5

SHOWN WITH OPTIONAL PORCH,  
FANLITE DOOR, DOOR SIDELITES AND DORMERS



**Virginia Homes**  
Building Systems

[www.virginiahomesbuildingsystems.com](http://www.virginiahomesbuildingsystems.com)

A Division of Modular Building Systems of PA