



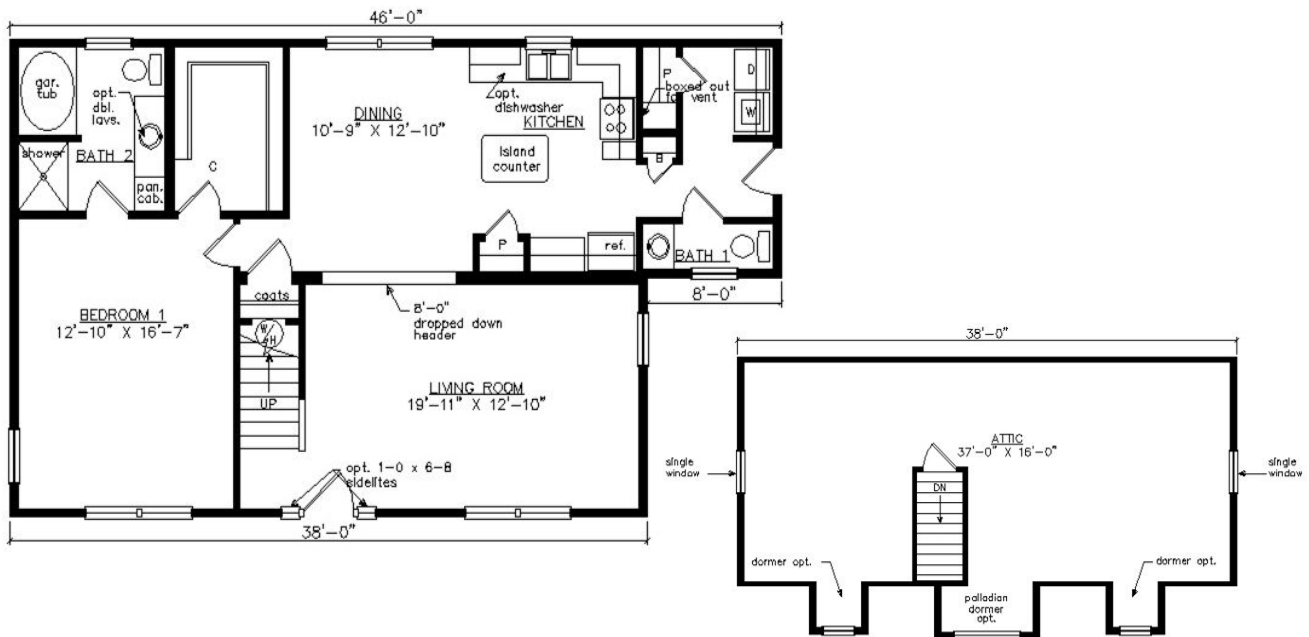
# NORTHAMPTON CAPE

27'6" x 46'

1155 SQ. FT. (FINISHED) / 633 SQ. FT. (UNFINISHED)

BEDROOMS: 1 BATHS: 1.5

SHOWN WITH OPTIONAL PORCH,  
FANLITE DOOR, DOOR SIDELITES AND DORMERS



**Virginia Homes**  
Building Systems

www.virginiahomesbuildingsystems.com  
A Division of Modular Building Systems of PA