



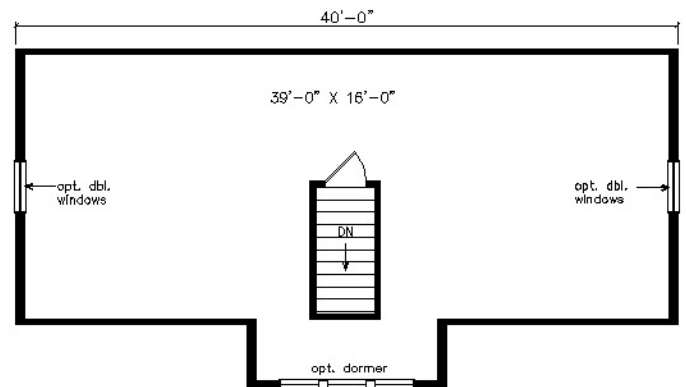
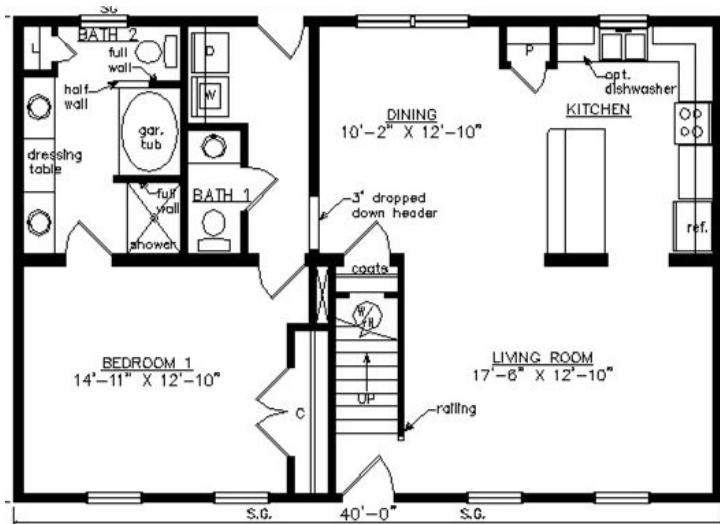
MIDLOTHIAN CAPE

27'6" x 40'

1100 SQ. FT. (FINISHED) / 640 SQ. FT. (UNFINISHED)

BEDROOMS: 1 BATHS: 1.5

SHOWN WITH OPTIONAL PORCH, CRAFTSMAN WINDOWS,
CRAFTSMAN DOOR AND DORMER



Virginia Homes
Building Systems

www.virginiahomesbuildingsystems.com

A Division of Modular Building Systems of PA