



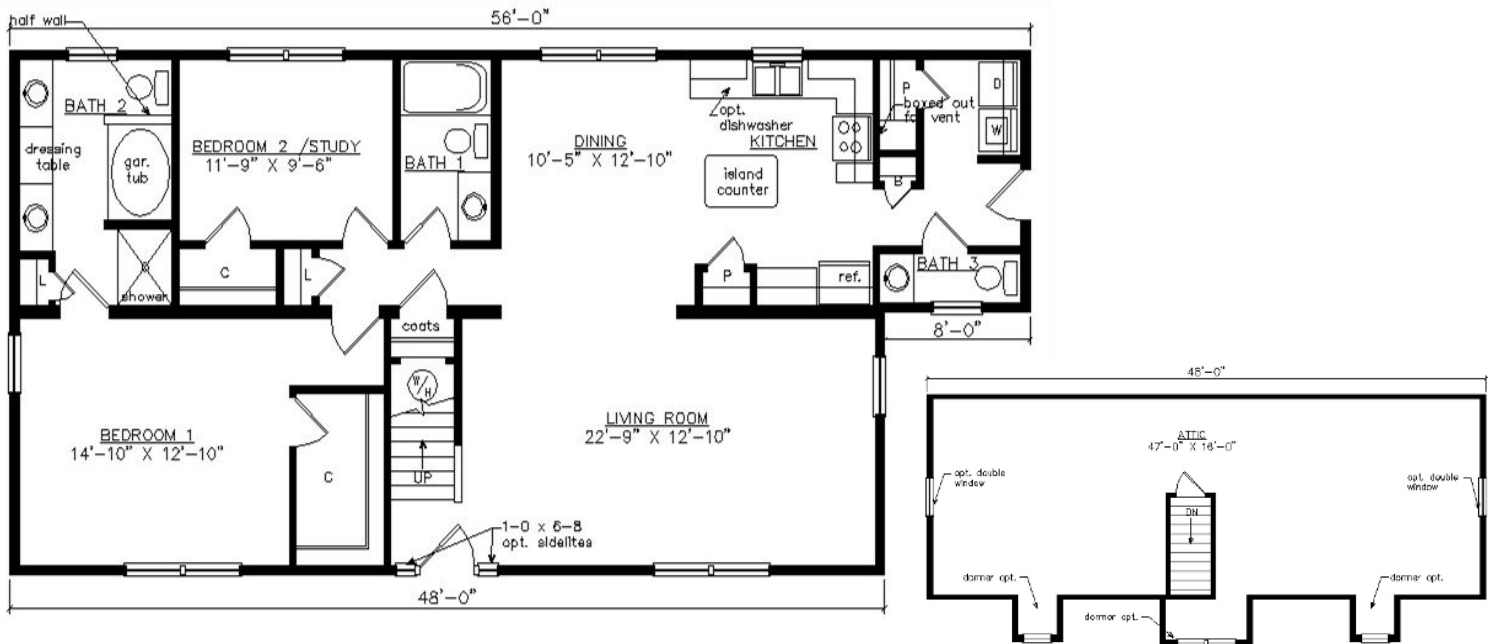
CAROLINA CAPE

27'6" x 56'

1430 SQ. FT. (FINISHED) / 800 SQ. FT. (UNFINISHED)

BEDROOMS: 2 BATHS: 2.5

SHOWN WITH OPTIONAL PORCH, FAN LITE DOOR,
DOOR SIDELITES AND DORMERS



Virginia Homes
Building Systems

www.virginiahomesbuildingsystems.com

A Division of Modular Building Systems of PA