



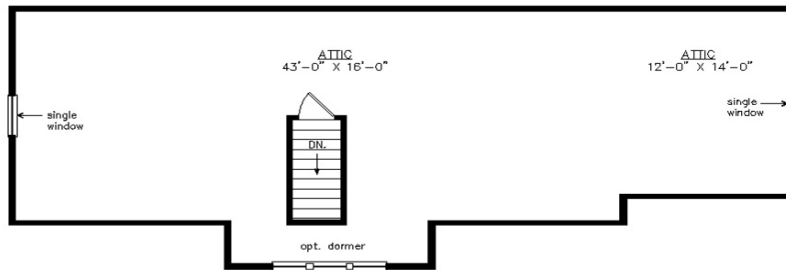
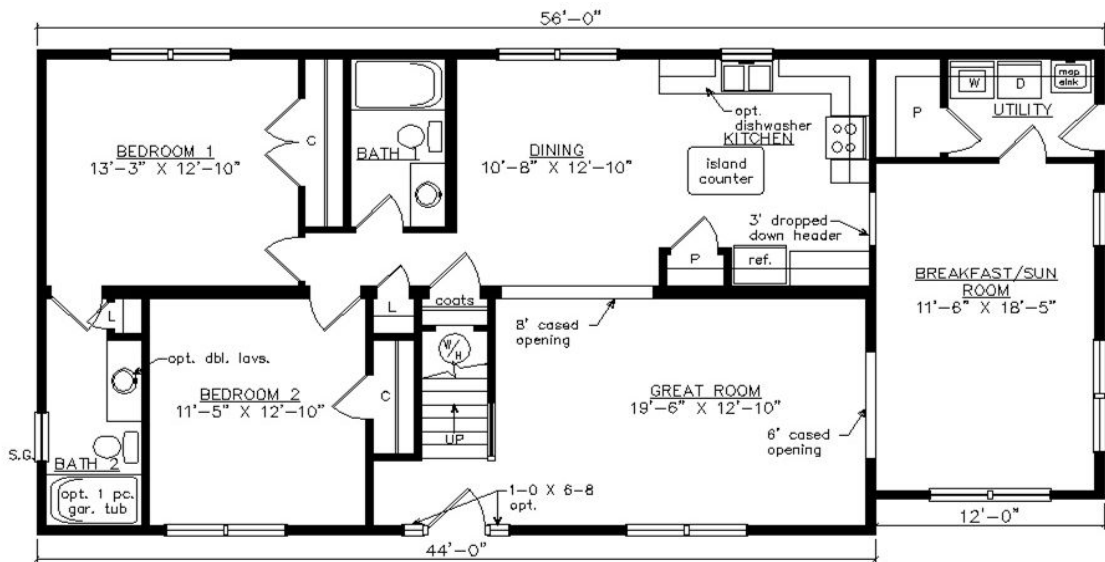
# AMELIA CAPE

27'6" x 56'

1516 SQ. FT. (FINISHED) / 909 SQ. FT. (UNFINISHED)

BEDROOMS: 2 BATHS: 2

SHOWN WITH OPTIONAL PORCH, CRAFTSMAN DOOR,  
DOOR SIDELITES AND SHED DORMER



**Virginia Homes**  
Building Systems

www.virginiahomesbuildingsystems.com  
A Division of Modular Building Systems of PA