



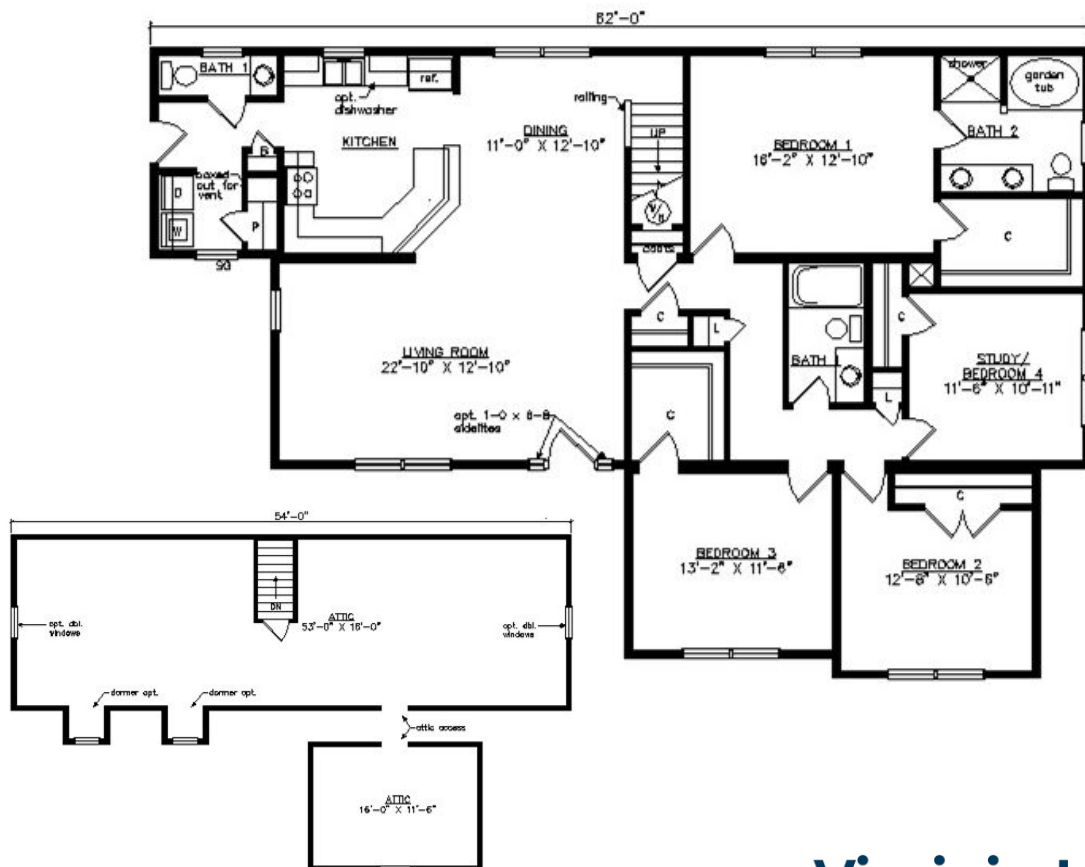
WILMINGTON I CAPE

41'3" x 62'

1946 SQ. FT. (FINISHED) / 1106 SQ. FT. (UNFINISHED)

BEDROOMS: 4 BATHS: 2.5

SHOWN WITH OPTIONAL PORCH, TRIANGLE GABLE VENT, DOOR SIDELITES, FANLITE DOOR AND DORMERS



Virginia Homes
Building Systems

www.virginiahomesbuildingsystems.com

A Division of Modular Building Systems of PA