



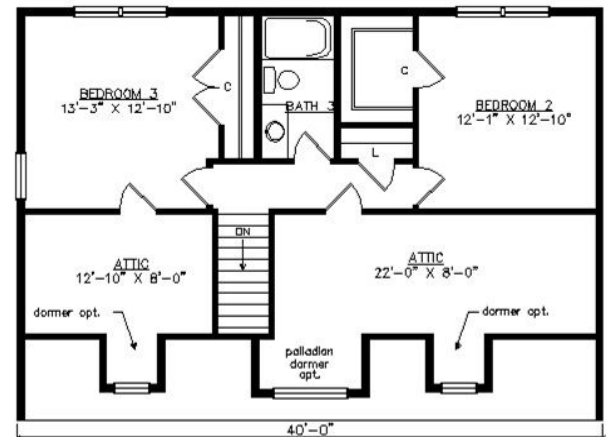
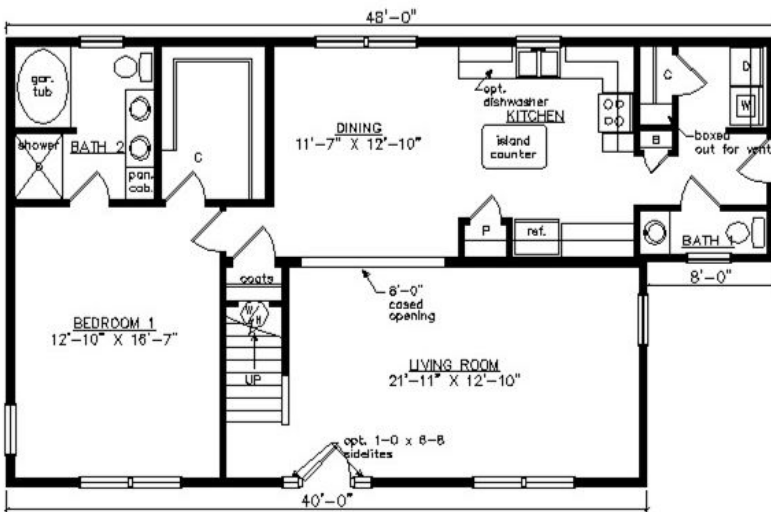
# SOUTHAMPTON SALT BOX

28'1" x 48'

1780 SQ. FT. (FINISHED) / 355 SQ. FT. (UNFINISHED)

BEDROOMS: 3 BATHS: 2.5

SHOWN WITH OPTIONAL PORCH,  
FANLITE DOOR, DOOR SIDELITES AND DORMERS



**Virginia Homes**  
Building Systems

[www.virginiahomesbuildingsystems.com](http://www.virginiahomesbuildingsystems.com)

A Division of Modular Building Systems of PA