



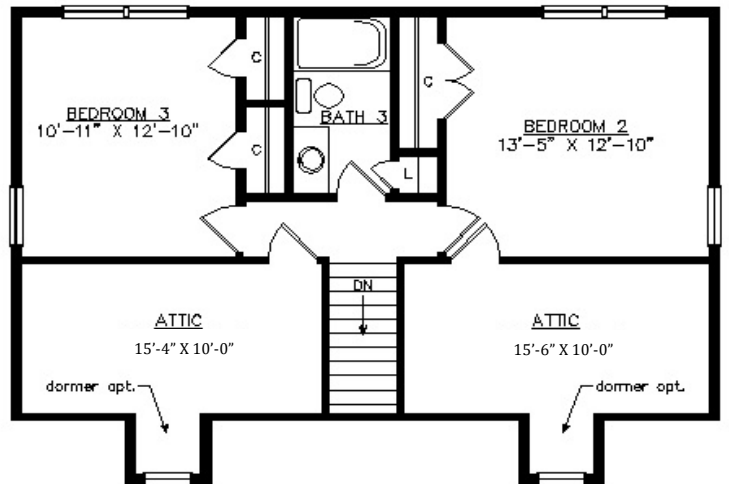
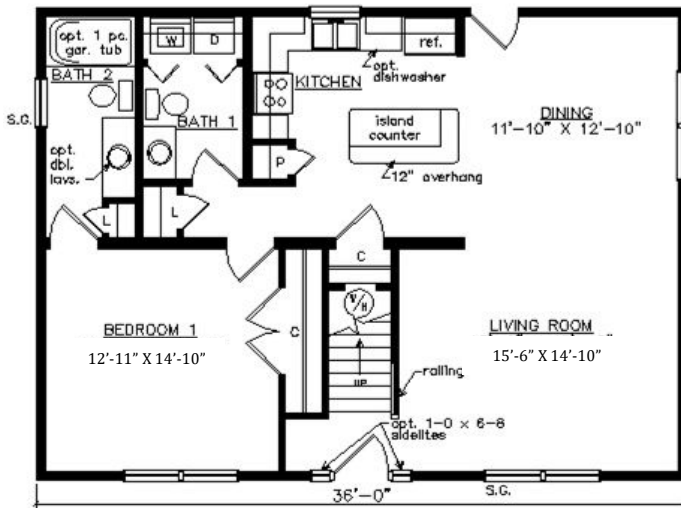
# SHENANDOAH SALTBOX CAPE

29'6" x 36'

1644 SQ. FT. (FINISHED) / 385 SQ. FT. (UNFINISHED)

BEDROOMS: 3 BATHS: 3

SHOWN WITH OPTIONAL ON SITE BUILT PORCH,  
FANLITE DOOR AND DORMERS



**Virginia Homes**  
Building Systems

[www.virginiahomesbuildingsystems.com](http://www.virginiahomesbuildingsystems.com)

A Division of Modular Building Systems of PA