



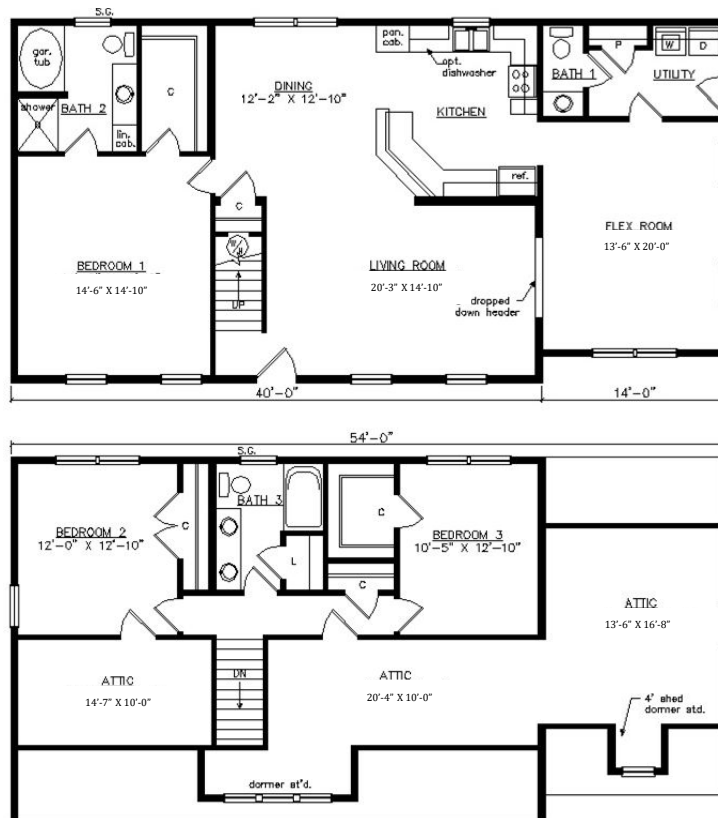
POWHATAN SALTBOX

29'6" x 54'

2122 SQ. FT. (FINISHED) / 678 SQ. FT. (UNFINISHED)

BEDROOMS: 3 BATHS: 2.5

SHOWN WITH OPTIONAL PORCH,
CRAFTSMAN DOOR AND DORMERS



Virginia Homes
Building Systems

www.virginiahomesbuildingsystems.com

A Division of Modular Building Systems of PA