



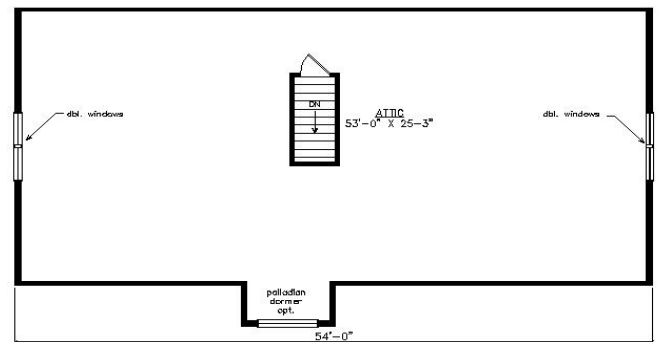
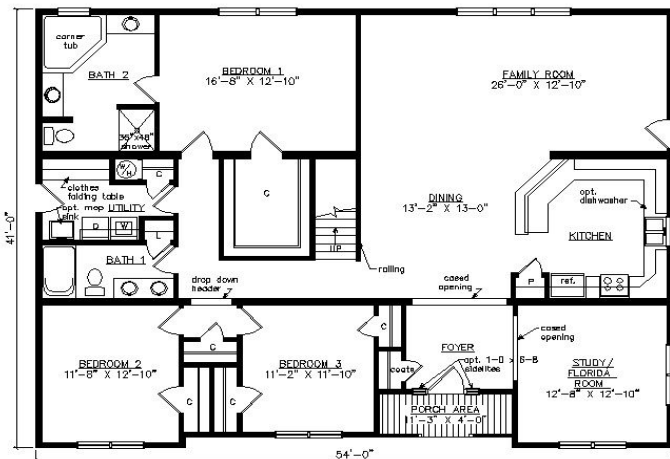
PORTSMOUTH CAPE

41'3" x 54'

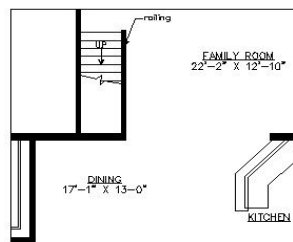
2143 SQ. FT. (FINISHED) / 1400 SQ. FT. (UNFINISHED)

BEDROOMS: 3 BATHS: 2

SHOWN WITH OPTIONAL FANLITE DOOR, DORMER AND TRIANGLE GABLE VENT



OPTION 2 (STAIR AREA)



Virginia Homes
Building Systems

www.virginiahomesbuildingsystems.com

A Division of Modular Building Systems of PA