



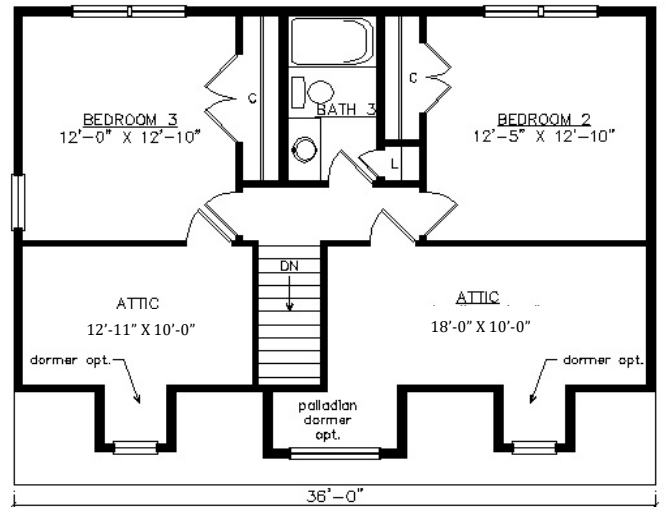
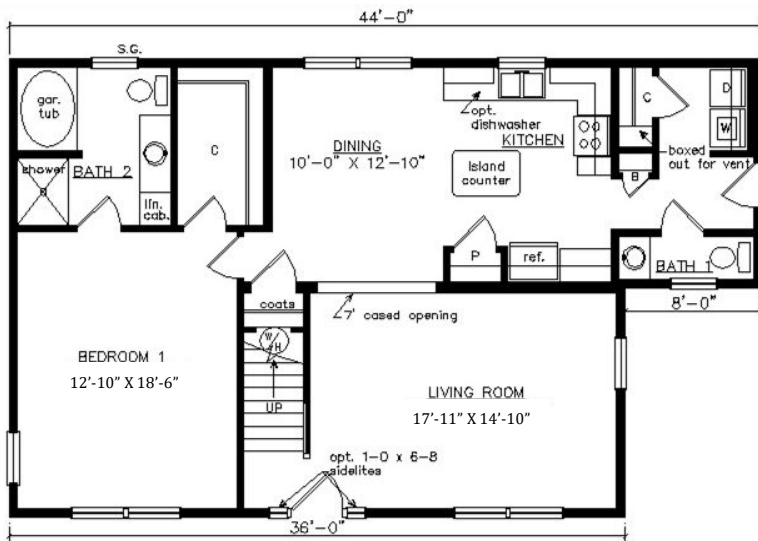
OXFORD SALTBOX CAPE

29'6" x 44'

1667 SQ. FT. (FINISHED) / 406 SQ. FT. (UNFINISHED)

BEDROOMS: 3 BATHS: 2.5

SHOWN WITH OPTIONAL PORCH,
FANLITE DOOR, DOOR SIDELITES AND DORMERS



Virginia Homes
Building Systems

www.virginiahomesbuildingsystems.com

A Division of Modular Building Systems of PA