



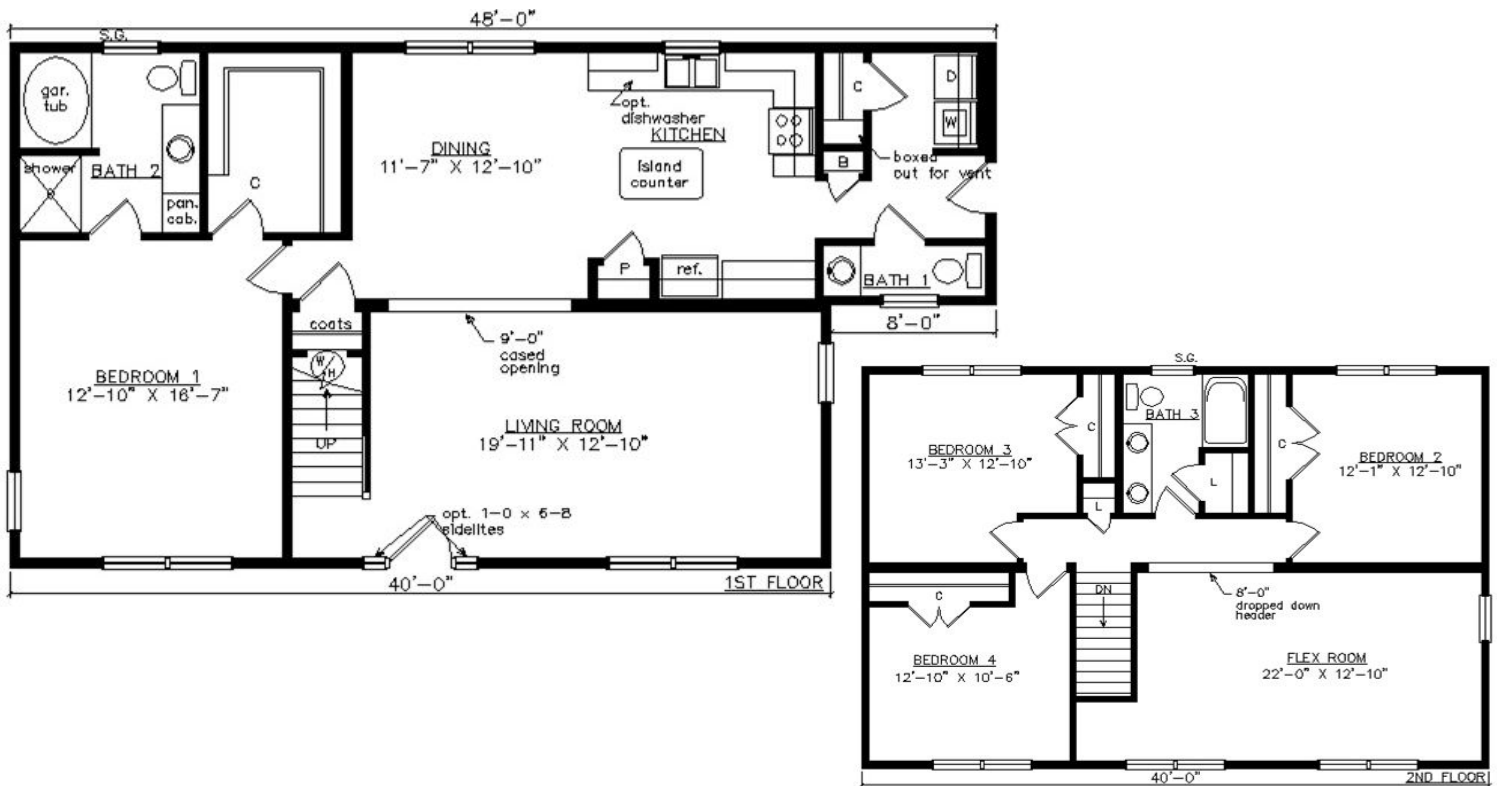
NORFOLK

28'1" x 48'

2365 SQ. FT.

BEDROOMS: 4 BATHS: 2.5

SHOWN WITH OPTIONAL PORCH,
CRAFTSMAN WINDOWS, CRAFTSMAN DOOR AND DOOR SIDELITES



Virginia Homes
Building Systems

www.virginiahomesbuildingsystems.com
A Division of Modular Building Systems of PA