



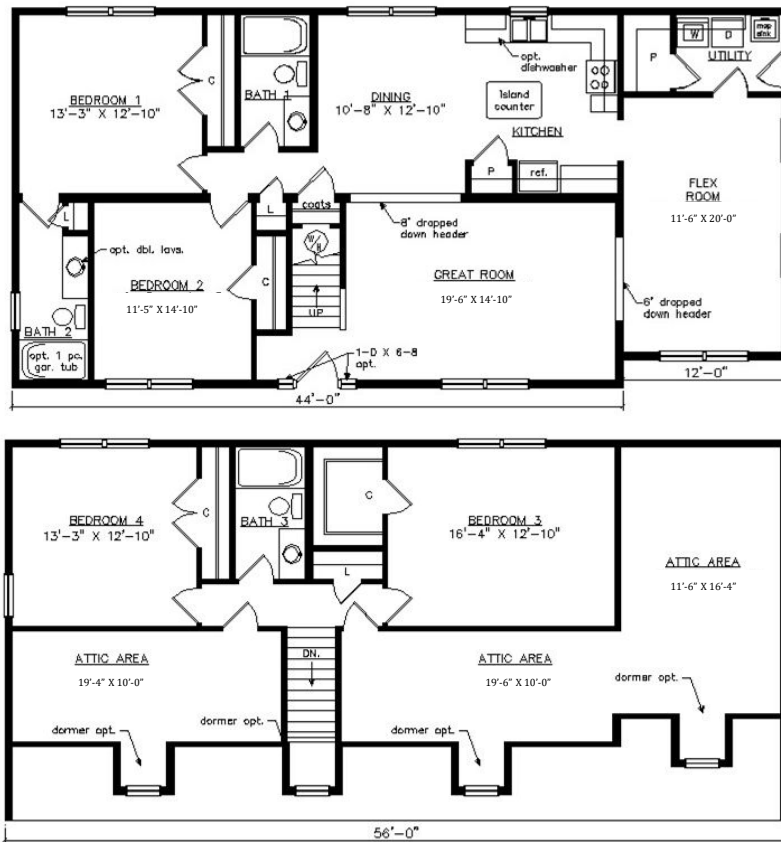
# NEW HARBOR SALT BOX

29'6" x 56'

2233 SQ. FT. (FINISHED) / 694 SQ. FT. (UNFINISHED)

BEDROOMS: 4 BATHS: 3

SHOWN WITH OPTIONAL STOOP, FAN LITE DOOR,  
DOOR SIDELITES AND DORMERS



**Virginia Homes**  
Building Systems

[www.virginiahomesbuildingsystems.com](http://www.virginiahomesbuildingsystems.com)

A Division of Modular Building Systems of PA