



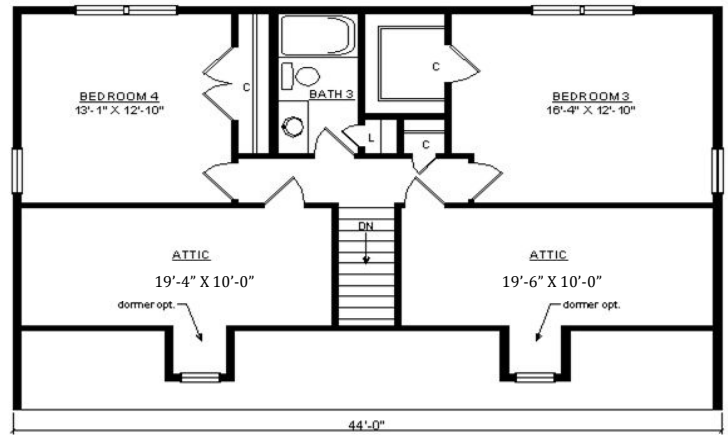
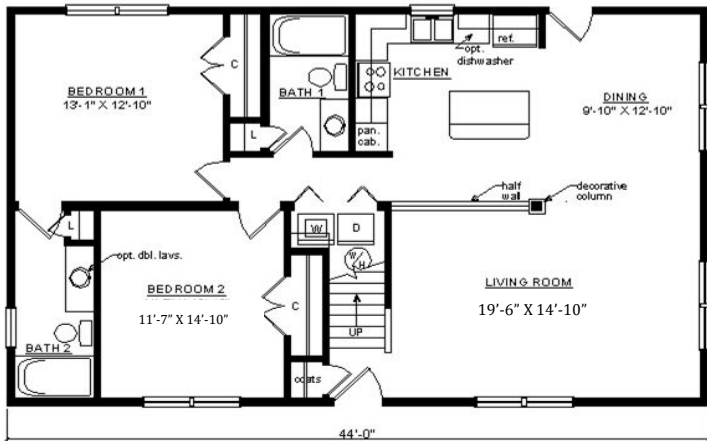
# KINGSPORT SALTBOX

29'6" x 44'

1903 SQ. FT. (FINISHED) / 465 SQ. FT. (UNFINISHED)

BEDROOMS: 4 BATHS: 3

SHOWN WITH OPTIONAL PORCH,  
FANLITE DOOR AND DORMERS



**Virginia Homes**  
Building Systems

[www.virginiahomesbuildingsystems.com](http://www.virginiahomesbuildingsystems.com)

A Division of Modular Building Systems of PA