



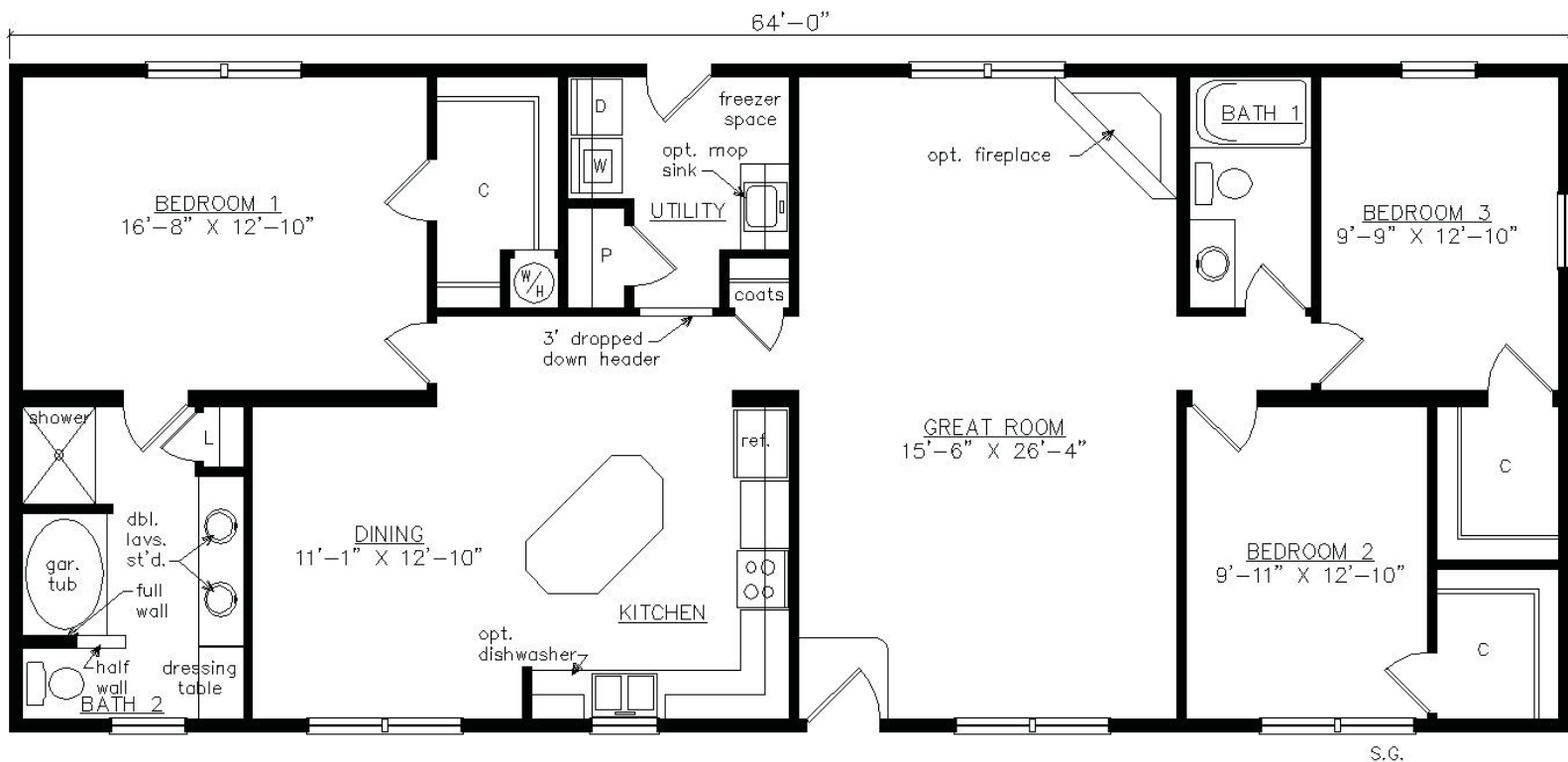
# KENSINGTON I

27'6" x 64'

1760 SQ. FT.

BEDROOMS: 3 BATHS: 2

SHOWN WITH OPTIONAL GABLE ON-SITE BUILT PORCH AND FANLITE DOOR



**Virginia Homes**  
Building Systems

[www.virginiahomesbuildingsystems.com](http://www.virginiahomesbuildingsystems.com)  
A Division of Modular Building Systems of PA