



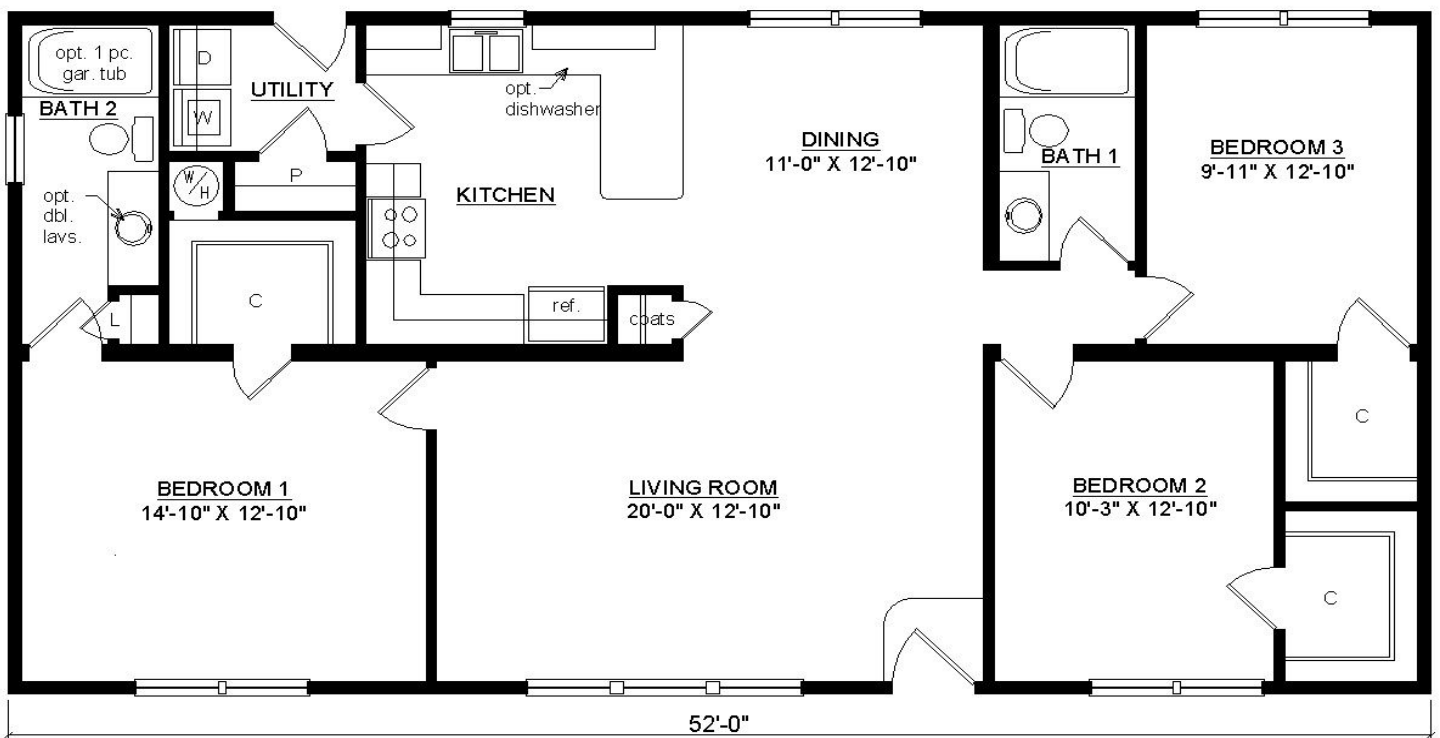
# FIFTH AVENUE

27'6" x 52'

1430 SQ. FT.

BEDROOMS: 3 BATHS: 2

SHOWN WITH OPTIONAL PORCH



**Virginia Homes**  
Building Systems

[www.virginiahomesbuildingsystems.com](http://www.virginiahomesbuildingsystems.com)  
A Division of Modular Building Systems of PA