



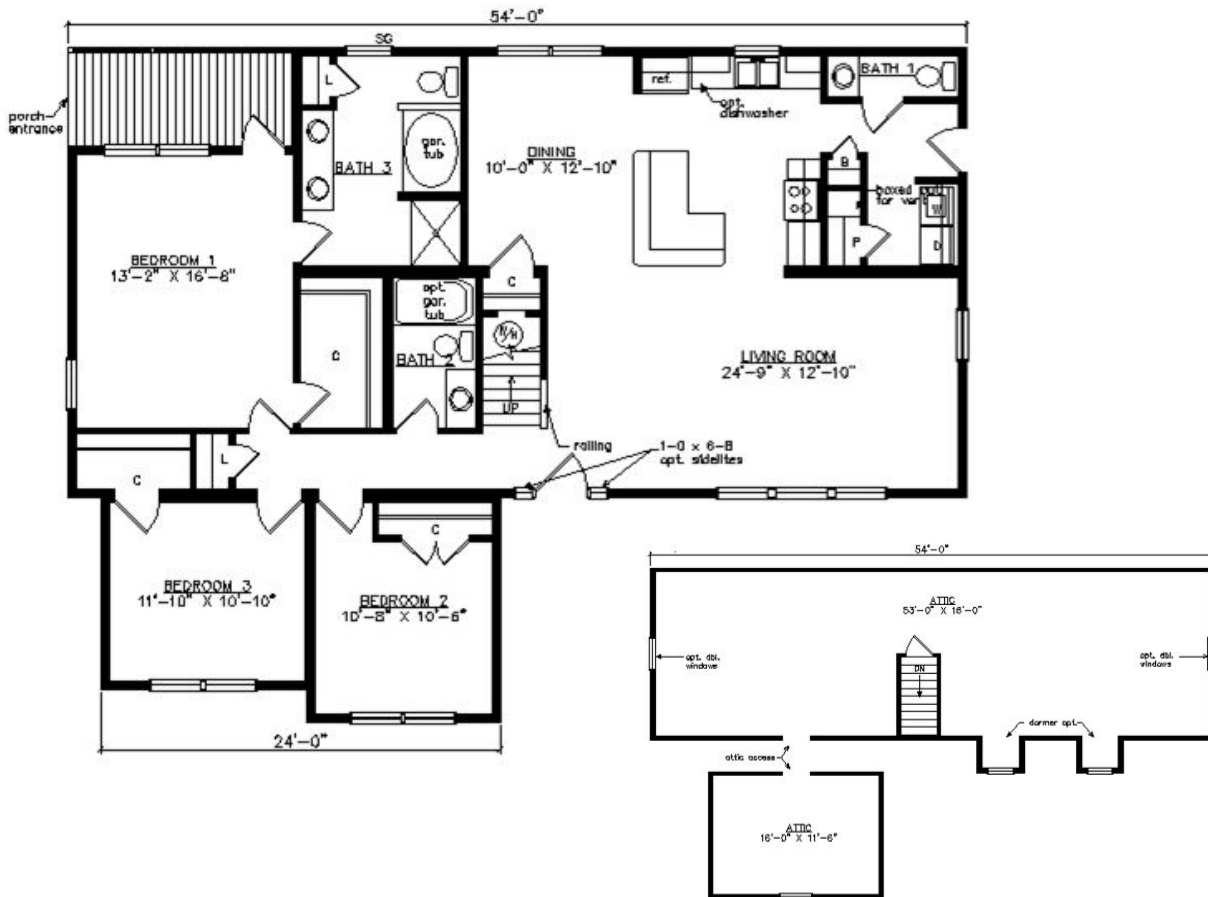
DINWIDDIE CAPE

41'3" x 54'

1708 SQ. FT. (FINISHED) / 1106 SQ. FT. (UNFINISHED)

BEDROOMS: 3 BATHS: 2.5

SHOWN WITH OPTIONAL PORCH,
FANLITE DOOR, DOOR SIDELITES, AND DORMERS



Virginia Homes
Building Systems

www.virginiahomesbuildingsystems.com

A Division of Modular Building Systems of PA