



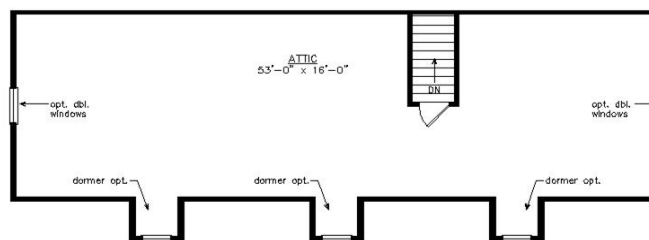
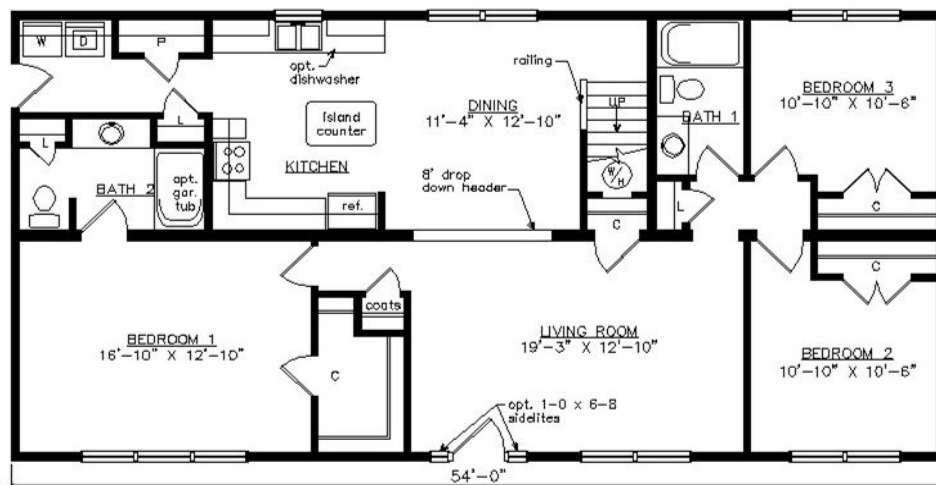
CAROLINE

27'6" x 54'

1485 SQ. FT. (FINISHED) / 896 SQ. FT. (UNFINISHED)

BEDROOMS: 3 BATHS: 2

SHOWN WITH OPTIONAL PORCH,
TRIANGLE GABLE VENT, FANLITE DOOR, DOOR SIDELITES AND DORMERS



Virginia Homes
Building Systems

www.virginiahomesbuildingsystems.com

A Division of Modular Building Systems of PA