



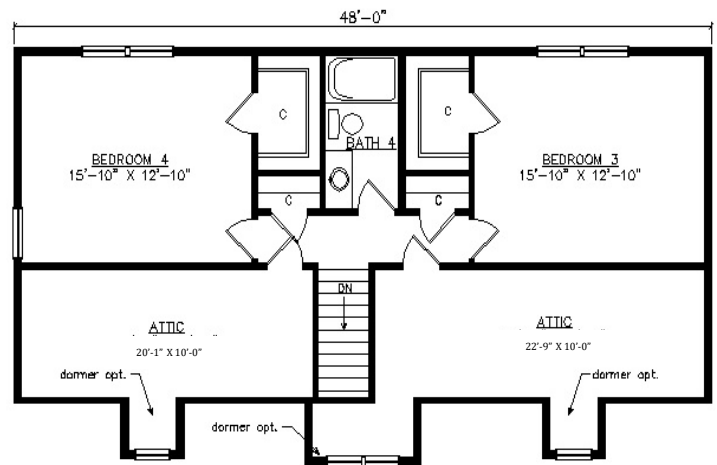
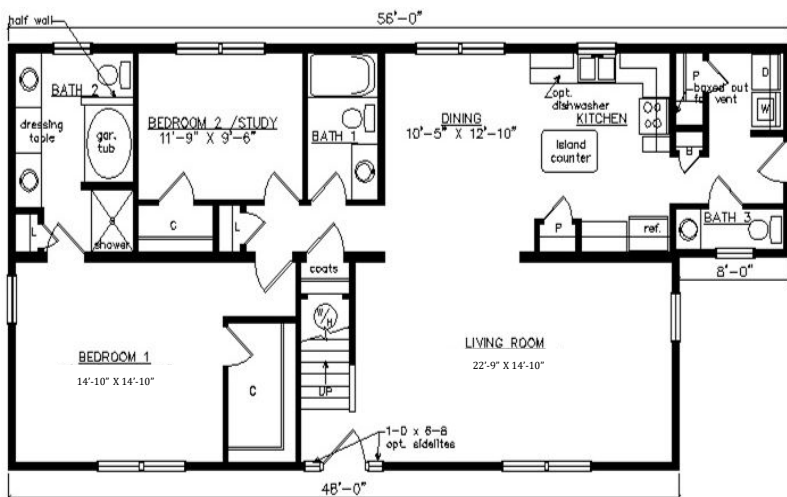
CAROLINA SALT BOX

29'6" x 56'

2185 SQ. FT. (FINISHED) / 526 SQ. FT. (UNFINISHED)

BEDROOMS: 4 BATHS: 3.5

SHOWN WITH OPTIONAL PORCH, FAN LITE DOOR,
DOOR SIDELITES AND DORMERS



Virginia Homes
Building Systems

www.virginiahomesbuildingsystems.com

A Division of Modular Building Systems of PA