



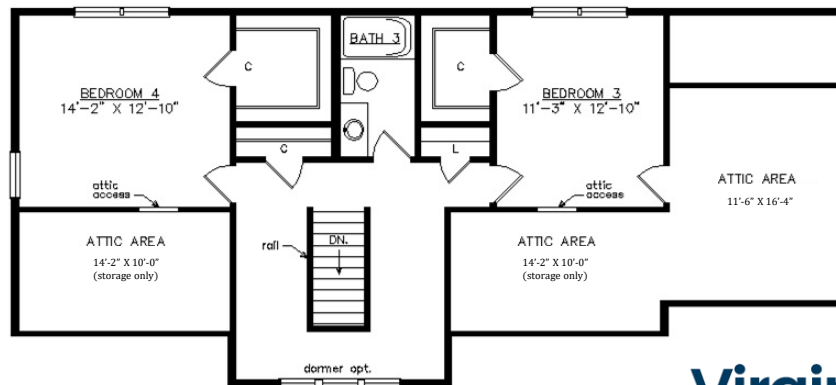
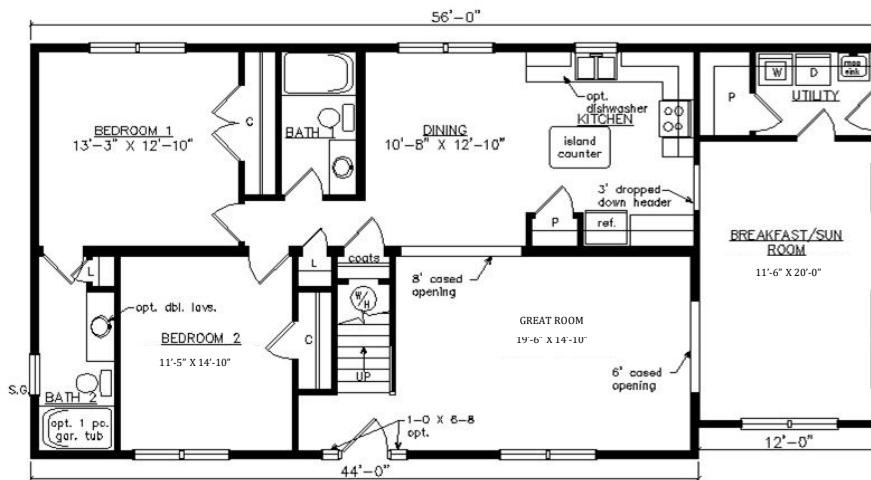
# AMELIA SALT BOX

29'5" x 56'

2233 SQ. FT. (FINISHED) / 676 SQ. FT. (UNFINISHED)

BEDROOMS: 4 BATHS: 3

SHOWN WITH OPTIONAL PORCH, CRAFTSMAN DOOR,  
DOOR SIDELITES AND SHED DORMER



**Virginia Homes**  
Building Systems

[www.virginiahomesbuildingsystems.com](http://www.virginiahomesbuildingsystems.com)

A Division of Modular Building Systems of PA